

Non-Violence • Emotional Intelligence • Social Learning • Shared Governance  
Open Communication • Social Responsibility • Growth and Change

# The BRIDGE

Fall 2011

A Publication of the Glade Run Foundation | [www.gladerun.org](http://www.gladerun.org)

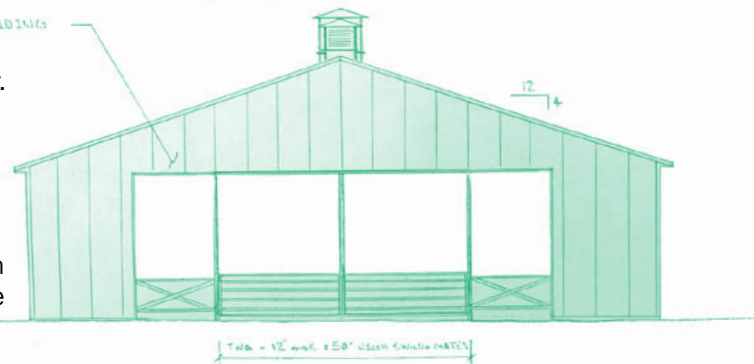


## A New Covered Riding Arena for Glade Run Adventures

Thanks to the generosity of our donors including the PM Moore Foundation and the Mylan Foundation, construction is beginning on our new covered riding arena in its planned location at our current outdoor arena. It is expected to be completed by January of 2012.

"We are very excited!" says the Therapeutic Animal and Horticulture Program Supervisor, Julie Wahlenmayer. "The new arena will allow us to teach riding lessons practically year round; protecting riders from the heat in the summer and keeping the ice and snow off of the footing in the winter. It will also be available for large gatherings on campus. The new arena will allow Glade Run to shine even brighter through the services that we can provide."

The new structure will measure 60' x 120' with a 14' height clearance. The sides will be open to the elements with split rail fencing and an 8' gate. Each end will have two 12' gates in the fencing. There will be three cupolas and 13 fiberglass skylights along the roofline on each side.



## Read The Bridge Online As News Happens!

Check out The Bridge at <http://www.gladerun.org>

Over the summer, Glade Run introduced a blog as a way to share news and information for those whom support our mission. A blog is a type of website that regularly updates with new content and is commonly displayed in reverse-chronological order. This format also uses something called tags as descriptors to help a reader filter the site. For example, perhaps a reader is particularly interested in gardening tips. Clicking on the #gardening or #tips tag at the end of an article makes filtering this content a snap. Give it a try!

The blog may be found by clicking on the 'Our Blog' link under the 'Experience' menu at the bottom of <http://www.gladerun.org> or by typing <http://gladerun.tumblr.com> into the address bar of your internet browser.





# A Message From the Executive Director

Dear friends,

This fall I attended a meeting in downtown Pittsburgh, and in the garage where I parked my car I saw a construction sign near a closed pedestrian walkway that read, "Temporary inconvenience for permanent improvement." This sign struck me, because it represents how I feel about the changes taking place at Glade Run Lutheran Services.

In the past ten months we have restructured the entire organization. We've worked with consultants and are placing increased emphasis on individualization, generalization and defining the true needs of children and families. We've changed our vision statement and our core values. We've created new positions to focus on training and family partnerships. These changes have not been easy. In short, they've been temporary inconveniences that will lead to a permanent improvement in the

solutions we provide for families in need.

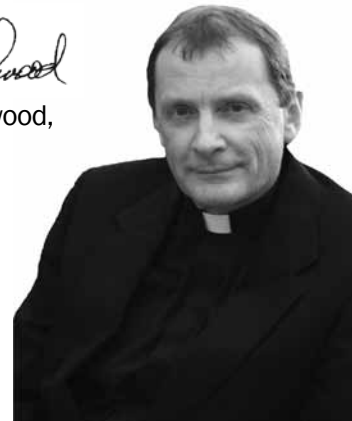
Support from research and trade publications confirm that we are moving in the right direction. More importantly, as I pray upon these ongoing changes and the future of Glade Run I am confident that God is pleased with our efforts to meet the changing- and challenging- needs of children and families.

In Ephesians 4:23 we are encouraged by Paul to be "...renewed in the spirit of our mind." Paul encourages us as believers to continually allow the Spirit of God to change and renew the way we serve. This renewal is made up of our beliefs, which transform our feelings, our attitudes and our behaviors. The miracle of a renewed mind enables us to have a divine perspective on the changing world and our purpose within it.

As the trees have begun to lose their vibrantly colored leaves and temperatures begin to plummet in the Earth's preparation for its own change, we renew our minds and focus on the permanent improvements that lie ahead for Glade Run. Though there is no physical sign representing our ongoing construction, our purpose is clear. I thank you for your continued prayers and support and wish God's blessings upon you.

Yours in service,

Charles T. Lockwood,  
M.Div., Ed.D.  
President/CEO



## Glade Run Lutheran Services Executive Management Team

Charles T. Lockwood, M.Div., Ed.D.  
*President/CEO*

Beth Hines, M.A.  
*Vice President, Education & Program Development*

Christopher Phillips, M.S.  
*Vice President, Supportive Services*

Oliver Stedeford, MSW, LSW  
*Vice President, Education & Program Development*

Sheila Talarico, B.S.  
*Executive Director, Glade Run Foundation*

## Visit Us Online

Glade Run Lutheran Services can be found online at [www.gladerun.org](http://www.gladerun.org). Visit us on Facebook or Twitter for a snapshot of going-ons at Glade Run.

## Boards of Directors

### Glade Run

Pr. Bernard Carl  
Diane Dawson  
Andrea Dubler  
Lori Greene  
Pr. Donald Green

Cynthia Holden-Elk  
Pr. Frank Podolinski, Jr.  
Pr. Alvin Shafer  
A. Richard Yoder

### Glade Run Lutheran Services

Andrea Dubler  
Cynthia Holden-Elk  
Pr. Christina Ingold  
Lori Green  
Valerie Martincek

Dr. Robert Olson  
Pr. Frank Podolinski, Jr.  
Theodore Schroeder  
James Thompson  
Pr. Alvin Shafer

### Glade Run Foundation

Karen Caddick  
Pr. Bernard Carl  
Keith Colonna  
Janet Franzen  
Robert Garrett  
Pr. Donald Green

Brian Kahle  
Michael Kummer  
Theodore Schroeder  
Susan Schwartz  
Charles Torie

## Certificate of Registration

The official registration and financial information of Glade Run Foundation may be obtained from Pennsylvania Department of State by calling, toll-free within Pennsylvania, 1-800-732-0999. Registration does not imply endorsement.

## Address Changes/Privacy Statement

To report a change of address or duplication, call the Glade Run Foundation office at 724-452-4453, ext. 1108 or e-mail [foundation@gladerun.org](mailto:foundation@gladerun.org). Your information is kept confidential and is not sold or shared.



**Help us grow our fan base!**  
"Like" and "follow" Glade Run Lutheran Services on Facebook and Twitter for a chance to win fun prizes!

# School as a Society

## Emphasizing Accountability Through Building Relationships

School as a Society is a surprisingly simple concept that re-imagines our school's organization as social natural supports to reinforce accountability through family and community relationships.

Each teacher and teaching assistant thinks of their class as a family unit and involves students in the development of the classroom to be more like a home. This includes responsibilities and opportunities to develop goals, incentives, and decorations that encourage a positive educational experience. Each class has a small sanctuary space in the classroom that serves as an area used to calm down or take a break when stress interferes with learning. This area within each classroom helps to manage everyday problems that surface.

In addition, each classroom has a sister classroom with whom they develop a relationship similar to an extended family or relatives. These two classrooms work together to provide support, solve problems and have fun together: like an extended family!

Our five program areas, elementary, middle, intermediate, and high school, along with our autism program were challenged to work together to develop hallways as individual neighborhoods and to create interesting names.



*Neighborhood signs at St. Stephen's reflect Sanctuary commitments.*

Expanding the neighborhood concept, two hallway neighborhoods compose a community in each school building. In addition to providing support, the community assumes responsibility for all the common areas in their building, such as decorating hallways and keeping the kitchen and library clean. Last year St. Stephen's Lutheran Academy began the process of implementing positive behavior interventions and supports through an incentive program that rewards positive behavior and academic achievement. Students and staff agreed that the school climate experienced a positive result and improvement.

This year the incentive program was further developed to emphasize accountability, and the School as a Society concept was developed from surveys, interviews and staff observations.

The students and staff have enthusiastically embraced and supported the School as a Society concept. It is amazing to watch the students and staff working together every day to create a safe, pleasant, and happy educational society.

## A Great Day!

### Glade Run Shines with Fall Festival Open House

The Zelenople campus held its first Fall Festival Open House on Saturday, October 1st. Despite an unseasonably cold and dreary day, we had a fantastic turnout from families, friends and community members.

Guests enjoyed hayrides and a petting zoo at Glade Run Adventures. A band played in the school gymnasium while tasty seasonal refreshments were served and carnival-style games were enjoyed by all. Many visitors also took advantage of the campus and school tours to see the many parts of Glade Run.



# Upcoming Events

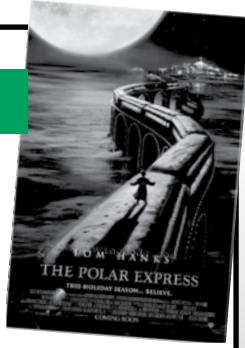
Please take note of our upcoming events. For more information, please contact Glade Run Foundation at 724-452-4453 ext. 1277 or [cmartin@gladerun.org](mailto:cmartin@gladerun.org).

## DECEMBER 3

### Polar Express Private Showing at The Strand, Zelienople

Friends and family of Glade Run are invited to kick off the holiday season with a family classic, complete with refreshments and a visit from Santa!

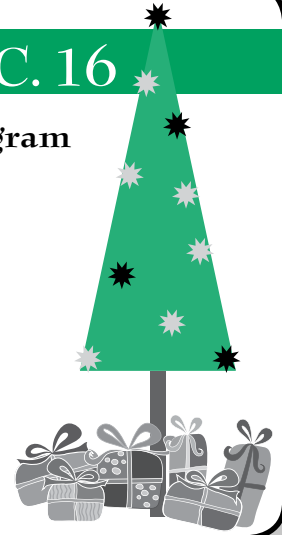
Two showings — 11 am and 2 pm  
Admission — A Christmas gift for a Glade Run child.  
Seating is limited. Reservations required.



## Now through DEC. 16

### Christmas Angel Program

Bring a smile to a child in need this Christmas by participating in the Glade Run Christmas Angel Program. Contact Glade Run Foundation to receive a tag with a child's wish, purchase the item and return your unwrapped gift to Glade Run by December 16. Gift cards are also a welcome gift choice.



## An Update to Clothing and Bedding Donations

Due to a recent change in health regulations Glade Run Foundation can no longer accept **used** clothing, bedding and stuffed animal donations until further notice. **New items** are being accepted. We appreciate your understanding.

SECA (4612-0012)  
CFC (44618)



[www.gladerun.org](http://www.gladerun.org)

724-452-4453  
foundation@gladerun.org

P.O. Box 70 - Beaver Road  
Zelienople, PA 16063

*a bridge to a brighter future  
through lifelong learning*

GLADE RUN  
FOUNDATION



Nonprofit Org.  
U.S. Postage  
PAID  
Zelienople, PA  
Permit No. 40