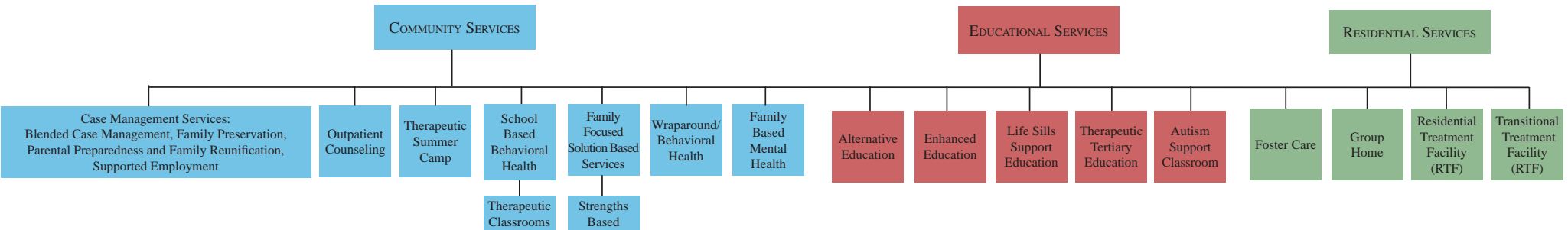




# CONTINUUM OF CARE

For admission information: (724) 452-4453

For additional information  
visit our website at:  
[www.gladerun.org](http://www.gladerun.org)



## COMMUNITY SERVICES

### CASE MANAGEMENT SERVICES:

**Blended Case Management** – An assigned case manager works with adults and children who suffer from a serious mental illness or emotional disturbance and their families to access, link, coordinate and monitor needed services.

**Family Preservation, Parental Preparedness and Family Reunification** – Provides in-home services and support to families to reduce the risk of out-of-home placement or to assist families anticipating and preparing for the return of their child from out-of-home placement.

**Supported Employment** – Assists people who have experienced mental health issues with finding and maintaining competitive employment.

**Outpatient Counseling** – Provides in-office therapy and psychiatric care for individuals experiencing life problems or mental health issues. Services may include individual, family and group therapy for children, adults and families.

**Therapeutic Summer Camp** – Provides summer camp at our Zelienople campus for children between the ages of 8 to 14 with a mental health diagnosis, which includes the therapeutic animal and horticultural program.

**School Based Behavioral Health Services** – Providing therapists to work in individuals/groups within school districts.

**Therapeutic Classrooms (Pittsburgh)** – Provides a therapist to work with students in a specialized classroom within the students' home school district. Therapists address group therapy social skill building activities, individual therapy and family therapy sessions, if desired.

**Family Focused Solution Based Services (FFSBS)** – Provides family and individual therapy, delivered in the home and community, to children with a diagnosed mental health condition, who are at risk for out of home placement. The service is provided by a team that consists of a therapist and a case manager who use a wide array of treatment methods, which are tailored to the strengths and resources of the individual and family.

**Strengths Based Treatment Program** – Individually delivered counseling in-home, in-school, and in-community treatment .

**Wraparound/Behavioral Health Rehabilitation Services** – This program uses professional staff and literally “wraps” services around an identified child and his/her family to assist the family with the child’s mental health needs.

**Family Based Mental Health Services (FBMH)** – Provides intensive family and individual therapy, delivered in the home and community, to children with a diagnosed mental health condition, who are at risk for out of home placement. The service is team delivered by a therapist and case manager who focus on the mental health needs of the child, the relationships within the family system and the natural strengths of the family.

## EDUCATIONAL SERVICES

**Tier I Alternative Regular Education** is designed for traditional/special education students grades 1-12 whose behavioral health & educational challenges are an obstacle in achieving academic success. **Special Education** is offered for students in grades 1-12 in need of special education services.

**Tier II Enhanced Education** helps students in grades 1-12 experiencing more intensive behavioral health, developmental and academic barriers.

**Life Skills Education** is designed for secondary students who have not experienced meaningful progress in a general education curriculum and require instruction in daily living skills. **Autism Support Education** provides comprehensive and individualized education for students ages 6-21 with moderate to high functioning Autism and Asperger’s syndrome.

**Tier III Therapeutic Tertiary Education** is designed for students in grades 9-12 who need more intensive therapeutic and behavioral interventions

## RESIDENTIAL SERVICES

**Foster Care** – Temporary or long-term placement for children ranging in age from infancy to age 18. Foster families provide a stable, nurturing environment for children in need.

**Group Homes** – Small, single gender homes serving adjudicated dependent or delinquent adolescents between the ages of 10 to 18.

**Residential Treatment Facility** – Children and adolescents between the ages of 8 to 18 with mental health diagnosis who are unable to reside in a less restrictive setting benefit from this therapeutic treatment program.

**Transitional Living Cottage** – Specialized traditional RTF unit, combined with independent living skills for males ages 16-21.

*Our continuum of care offers clients with various treatment needs to move seamlessly to the most suitable program of care within one agency.*